



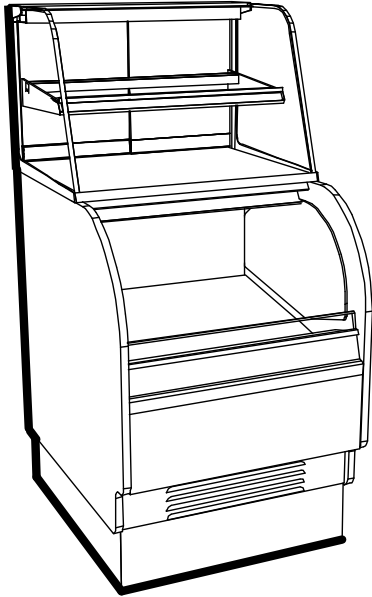
PRODUCT SPECIFICATIONS

ITEM NO. _____
PROJECT: _____
DATE: _____

Service Non-Refrigerated/Self-Service Refrigerated Merchandiser

COU2757R 28"L x 34 1/2"D x 56 7/8"H

STANDARD FEATURES



- Case controller for refrigeration and defrost cycles.
- Integrated average product temperature of 41°F or less.
- Electric condensate evaporator pan with all self-contained refrigeration packages.
- Compressor air intake through rear & out front panel. Front panel cannot be blocked.
- One year parts & labor; one to five year compressor warranty.
- Full end panels with mirror inside.
- Angled bottom deck in refrigerated self-service section.
- One glass shelf with light in upper non-refrigerated service section.
- Fixed position curved front glass.

	STANDARD SPECIFICATION	OPTION(s)
TOP LIGHT	<input type="checkbox"/> 8 top light with protective coating	<input type="checkbox"/> None
INTERIOR COLOR	<input type="checkbox"/> Black	<input type="checkbox"/> Stainless Steel
EXTERIOR COLOR	<input type="checkbox"/> Wilsonart/Formica non-premium Laminate	<input type="checkbox"/> Wilsonart/Formica premium Laminate <input type="checkbox"/> Stainless Steel
COVER/CURTAIN	<input type="checkbox"/> None	<input type="checkbox"/> Night curtain, pull-down, non-locking <input type="checkbox"/> Security cover, removable, locking
REFRIGERATION	<input type="checkbox"/> Self contained w/straight blade power cord	
UPPER REAR	<input type="checkbox"/> Clear glass rear sliding doors w/o lock	<input type="checkbox"/> Clear glass rear sliding doors w/lock <input type="checkbox"/> Reflective glass rear sliding doors w/lock <input type="checkbox"/> Reflective glass rear sliding doors w/o lock
STEP DISPLAY	<input type="checkbox"/> None	<input type="checkbox"/> 2" inserts (3 levels)



Note: Information is subject to change at any time.
888 Porter Rd. Muskegon, MI 49441 Phone: 231.798.8888 Fax: 231.798.4960 www.structuralconcepts.com

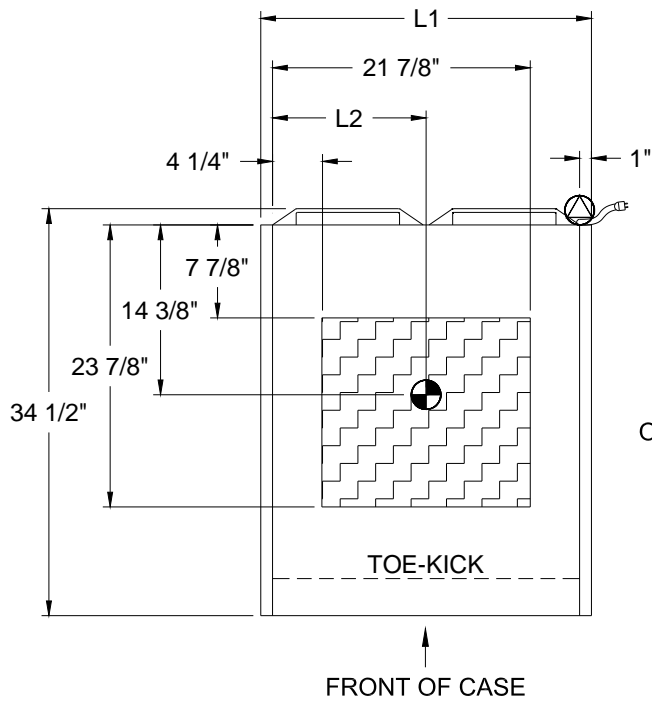
PRODUCT SPECIFICATIONS

Intended Use of Display Area: Packaged refrigerated products

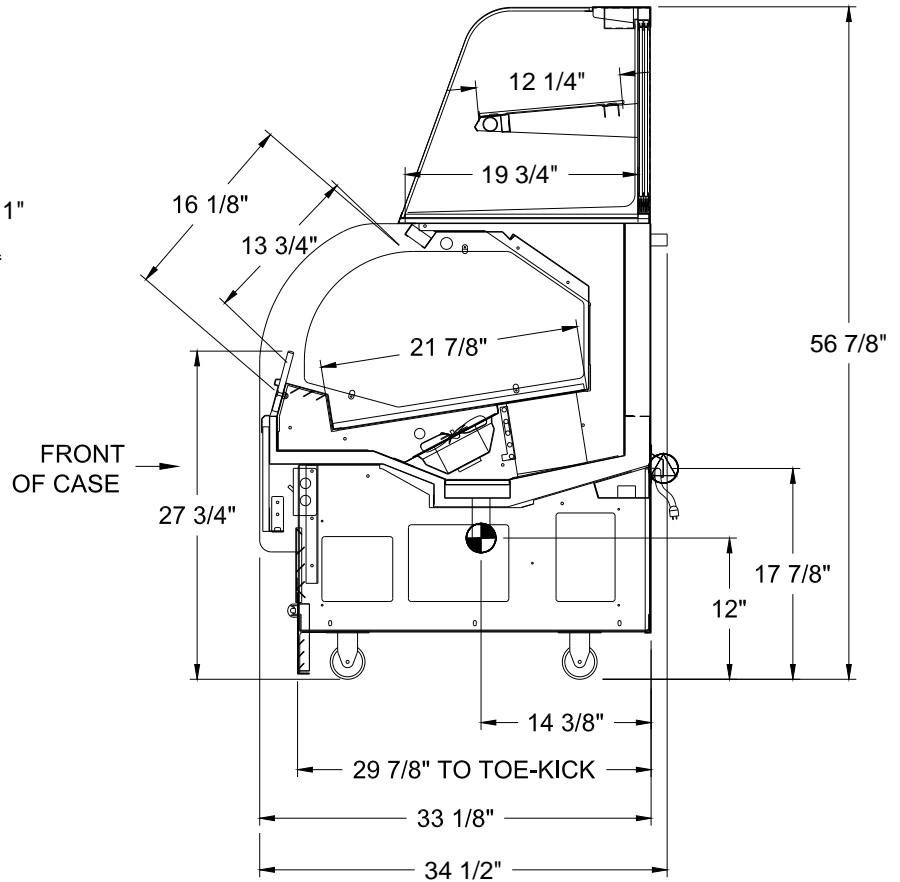
Integrated Product Temperature (IPT): 41°F

Intended Environment: Designed to operate in ambient conditions of 75°F / 55% relative humidity.





PLAN VIEW



SIDE VIEW



NOTE: ALL DIMENSIONS APPROXIMATE

-  ELECTRICAL JUNCTION BOX (SUPPLIED WITH 6" LEADS OR POWER CORD)
-  LOCATION OF CONDENSATE DRAIN TUBE (SUPPLIED WITH 3/4" OR 1 1/2" PVC DRAIN TUBE)
-  PREFERRED LOCATION FOR SERVICE ENTRY
-  REFRIGERANT LINE CONNECTION

Model	Self-Contained Refrigeration/Dry					Remote Refrigeration w/Leads			Ship Wt	Frt Cls
	L1*	L2*	Volts++	Amps	NEMA Plug	Volts++	Amps***	BTUH		
COU2757R	28	12 3/4	120/1/60	6.91	NEMA 5-15 P	N/A	N/A	N/A	530	110

++ Operating range for 120 volt rating is 110-120 volts; operating range for 220 volt rating is 208-230 volts.

** Requires 3 wires + ground

*** Does not include electric defrost on freezer models

REGULATORY APPROVALS

- ETL Listed Conforms to UL 471
- ETL Sanitation Conforms to NSF 7

Important Note:

35 1/2" Minimum door entry clearance required (Without shipping skid).

Important Note:

Compressor air ventilation is out the front panel. Front panel cannot be blocked.

Important Note:

Product must be cooled before being displayed within the case.